

PSD 2025

PSLE. SBB (Pri). DSA

OUTLINE OF SHARING

01

All About PSLE

02

Subject-Based Banding
(SBB) in Primary School

03

Direct School Admission
(DSA)



04

Questions & Answers

All About PSLE



West Spring
Primary

All About PSLE



What is PSLE?

The Primary School Leaving Examination (PSLE) is a national exam that assesses students' learning at the end of primary education in English, Mother Tongue, Mathematics, and Science.

Purpose

To gauge readiness for secondary education and place students in suitable academic pathways.

Key 2025 PSLE Dates

Oral Exams: 13 and 14 August 2025

Listening Comprehension: 16 September 2025

Written Papers: 25 September to 1 October 2025

Results Release: Around mid-November 2025

Subjects Tested

English, Mother Tongue, Mathematics, Science
(Higher Mother Tongue is only for students offered the subject)

<https://www.moe.gov.sg/microsites/psle-fsbb/psle/main.html>

Updates in 2025 / 2026

Increased Opportunities to offer Higher Mother Tongue Languages

From 2026, Secondary 1 students who do well in their MTL (i.e. obtain All / AL2 in MTL or Distinction / Merit in HMTL) at PSLE will be offered HMTL in secondary school, regardless of their overall PSLE score.



Eligibility criteria for Subjects at a more demanding level

| Eligibility criteria to offer English Language, Mother Tongue Languages, Mathematics and/or Science at a more demanding level | | | |
|---|---------------------|-----------------------|----------------------------|
| Indicative Level of Most Subjects at Start of S1 | PSLE Standard grade | PSLE Foundation grade | Option to offer subject at |
| G2 | AL 5 or better | - | G3 |
| G1 | AL 5 or better | - | G2 / G3 |
| | AL 6 | ALA | G2 |

<https://www.moe.gov.sg/microsites/psle-fsbb/full-subject-based-banding/secondary-school-experience.html>

Understanding the AL Scoring System

Achievement Levels (ALs)

- AL1: ≥ 90
- AL2: 85–89
- AL3: 80–84
- AL4: 75–79
- AL5: 65–74
- AL6: 45–64
- AL7: 20–44
- AL8: < 20

PSLE Score = Sum of 4 Core Subjects ALs

Achievement Equivalent Levels (ALs) for Foundation Subjects

| Foundation Grade | Equivalent Standard AL |
|------------------|------------------------|
| AL A | AL6 |
| AL B | AL7 |
| AL C | AL8 |

Example 1:

- English: AL2
- Math: AL3
- Science: AL4
- Mother Tongue Language: AL2

Total AL Score $\rightarrow 11$

Example 2 (with Foundation Subject):

- English: AL4
- Foundation Math: AL A (AL6)
- Science: AL4
- Mother Tongue Language: AL4

Total AL Score $\rightarrow 18$



<https://www.moe.gov.sg/microsites/psle-fsbb/resources/score-calculator.html>

Strategies for Success



Academic Tips:

- Regular revision using school and MOE resources (e.g. Student Learning Space (SLS))
- Timed Practice with past-year papers
- Clarify doubts early with teachers

Well-being Matters:

- Ensure your child has enough sleep and balanced nutrition
- Encourage breaks, hobbies, and family time to manage stress

Parental Support:

- Build consistent routines
- Celebrate effort, not just results
- Communicate with the school when support is needed

Useful Tools:

MOE Parent Kit (Well-being tips): [MOE Parent Kit](#)

Looking Ahead – Post-PSLE Pathways

Direct School Admission (DSA):

Alternative path based on talents in sports, arts, or academics

Sec 1 Posting:

Consider PSLE score, school culture, distance from home, CCAs, and child's interests

Posting Groups:

MOE will post students to secondary school through three Posting Groups – Posting Groups 1, 2, and 3.

Posting Groups will only be used for the purposes of admitting students into secondary school and to guide the initial subject levels students can offer at the start of Secondary One.

Full Subject-Based Banding (SBB):

Greater flexibility in secondary school subjects from 2024 onward



MOE Post-PSLE Options: <https://www.moe.gov.sg/secondary>

MOE DSA: <https://www.moe.gov.sg/secondary/dsa>

Subject-Based Banding (SBB) in Primary School



What is Subject-Based Banding (SBB) in Primary school?

SBB allows students to take subjects at different levels (Standard or Foundation) based on their strengths and learning needs.

At end of Primary 4, school will recommend a subject combination for Primary 5 based on exam results.

Students may take:

- All subjects at Standard level
- A mix of Standard and Foundation subjects (e.g., Standard English and Foundation Mathematics)
- selected students may take higher mother tongue language (HMTL)

Benefits

- Better match to student's learning pace
- Builds confidence and supports progress

More information:

<https://www.moe.gov.sg/primary/curriculum/subject-based-banding>



- **Encourage a growth mindset:** Progress in any subject is possible with effort.
- Build your child's confidence
- Stay in touch with teachers to monitor progress.
- SBB is about giving them the best chance to succeed at their own pace.

Supporting Your Child in the SBB Journey



Direct School Admission (DSA)



What is Direct School Admission (DSA)?

DSA-Sec provides a pathway for students to gain admission to secondary school based on their interests, aptitude, and potential, beyond performance at PSLE.

Focus areas may include:

- Academic talents (e.g., Math, Science)
- Sports and games
- Visual/performing arts
- Leadership and uniformed groups
- Languages and debate

Successful DSA applicants receive a confirmed place in the secondary school, subject to qualifying PSLE score for a course.

More information:

<https://www.moe.gov.sg/secondary/dsa>



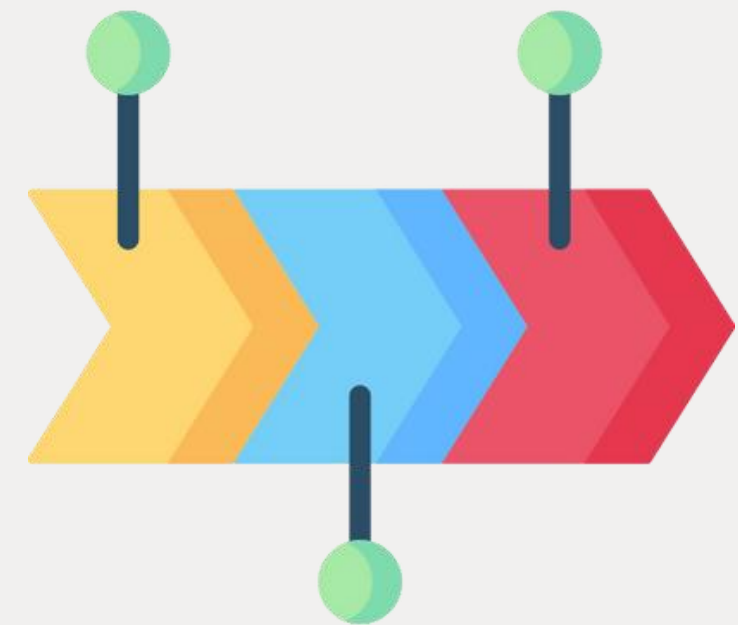
DSA Application Timeline & Process

Step-by-Step DSA Journey

- May – June: Online application via MOE DSA-Sec Portal (no hardcopy needed).
- July – August: Shortlisting and selection trials/interviews by secondary schools.
- By September: Offer results released.
- Late October: Accept or reject DSA offers.
- November: PSLE results

You have from 11am on Wednesday, 7 May 2025 to 3pm on Tuesday, 3 June 2025 to submit your child's application. Follow these steps:

1. Use this [application template](#) to help you prepare the relevant information together with your child, before starting the online application. This facilitates smooth and efficient completion during online submission, saving time and ensuring a seamless application process.
2. Log in to the DSA-Sec Portal with your Singpass. Find out [how to register for a Singpass](#).
3. Indicate up to 3 choices and 3 talent areas. You may indicate up to 2 talent areas for the same school. If you want to apply for 2 talent areas at the same school, you must indicate both as separate choices.



Your child may be suitable if they:

- Show strong interest and consistent performance in a talent area
- Have participated in relevant competitions, performances or leadership roles
- Are keen to grow in that area even in secondary school

DSA may not be for everyone — students should still prepare well for PSLE.

Important: DSA schools may have high expectations in that domain.

Is DSA Right for My Child?



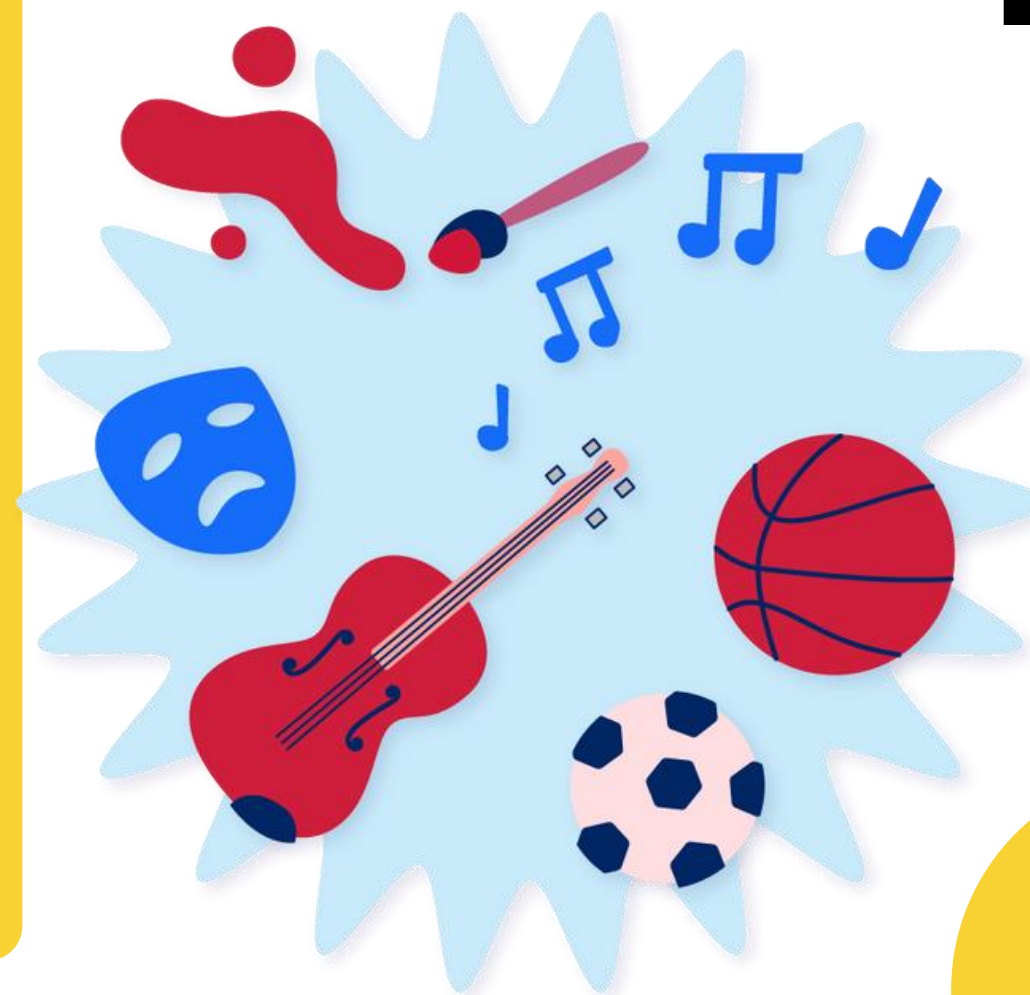
Applications are free and limited to 3 school choices.

Prepare your child for interviews and/or trials confidently.

Once a DSA offer is accepted, it is binding – your child **must** join that school.

PSLE remains important: Your child must qualify for relevant posting group based on DSA school's cut-off.

Important Reminders for Parents





**Thank
You.**

The image features a minimalist design with the words "Thank You." in a bold, black, sans-serif font. The text is centered and overlaid on a light gray circular background. To the left of the text is a large yellow circle, and to the right is a smaller yellow circle. A dark gray circle is positioned at the top left, and another dark gray circle is at the bottom left. A small dark gray circle is also located to the right of the word "You." The overall composition is clean and modern.